

# Phytocannabinoid CRM Mixtures

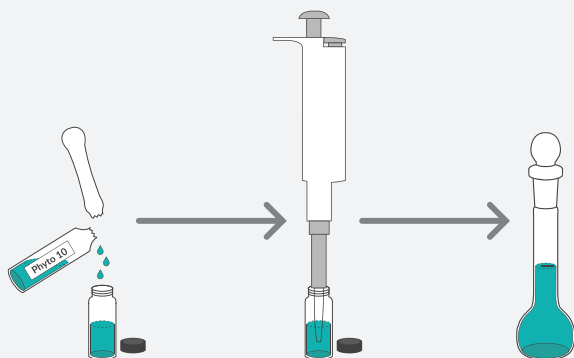


High-quality reference materials with established metrological traceability are an essential element for measurement accuracy during routine analytical checks as well as for *Cannabis* product quality testing and profiling. Cayman offers a suite of ISO 17034-produced, multi-component Certified Reference Material (CRM) mixtures that are designed and engineered to the highest standards to give you confidence in your analytical data.

Compared to stock solutions prepared using several single-component CRMs, Cayman's mixtures provide more reliable data and better efficiency.

## Streamline Your Workflow

Snap a **Single** Ampule, Dilute, and Inject



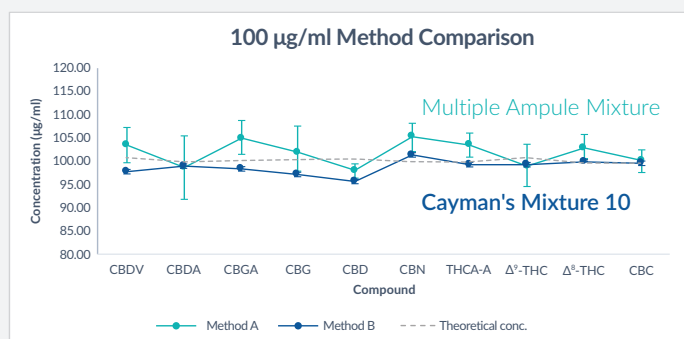
## Quantify Up to 11 Cannabinoids



## Reduce Consumables & Increase Efficiency



## Improve Quantitation Accuracy



Access the full application note to learn how commercially prepared CRM mixtures were shown to improve precision and accuracy of analysis at [www.caymanchem.com/CRMmixtures](http://www.caymanchem.com/CRMmixtures)

View our range of pre-made Phytocannabinoid CRM Mixtures at [www.caymanchem.com/phytomix](http://www.caymanchem.com/phytomix)

# Reduce Preparation Time, Consumables, and Variability!

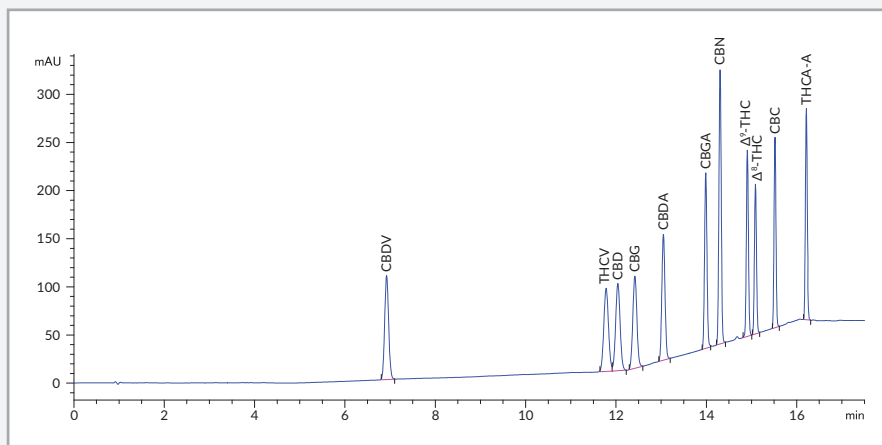
## Featured Mixture

### Phytocannabinoid Mixture 11 (CRM) - Item No. 21306

A quantitative 11-analyte mixture for the simultaneous detection of prevalent cannabinoids found in Cannabis

Contains (250 µg/ml of each compound):

- Cannabidivarin (CBDV)
- Tetrahydrocannabivarin (THCV)
- Cannabidiol (CBD)
- Cannabigerol (CBG)
- Cannabidiolic Acid (CBDA)
- Cannabigerolic Acid (CBGA)
- Cannabinol (CBN)
- $\Delta^9$ -Tetrahydrocannabinol ( $\Delta^9$ -THC)
- $\Delta^8$ -Tetrahydrocannabinol ( $\Delta^8$ -THC)
- ( $\pm$ )-Cannabichromene (CBC)
- Tetrahydrocannabinolic Acid A (THCA-A)



## Phytocannabinoid Single- and Multi-Component CRMs

Analytes Included	Phytocannabinoid Mixture 3 (CRM) Item No. 23251 1 mg/ml each	Phytocannabinoid Mixture 4 (CRM) Item No. 25106 1 mg/ml each	Phytocannabinoid Mixture 5 (CRM) Item No. 25076 500 µg/ml each	Phytocannabinoid Mixture 6 (CRM) Item No. 25077 500 µg/ml each	Phytocannabinoid Mixture 10 (CRM) Item No. 21305 250 µg/ml each	Phytocannabinoid Mixture 11 (CRM) Item No. 21306 250 µg/ml each
CBD	✓	✓	✓	✓	✓	✓
$\Delta^9$ -THC	✓	✓	✓	✓	✓	✓
THCA-A		✓	✓	✓	✓	✓
CBN	✓		✓	✓	✓	✓
CBDA			✓	✓	✓	✓
CBG				✓	✓	✓
CBC					✓	✓
CBDV					✓	✓
CBGA					✓	✓
$\Delta^8$ -THC		✓			✓	✓
THCV						✓

Learn how pre-made, multi-component CRM mixtures improve quantitation accuracy at [www.caymanchem.com/CRMmixtures](http://www.caymanchem.com/CRMmixtures)